

Join Panda Travel in...



2026 Leaf Peepers - Alpine Route Adventure, Nagoya & Beyond

(GP13550)



Sept 28 - Oct 6, 2026
7 Nights/ 9 Days

*Nagoya - Matsumoto - Alpine -
Toyama - Takayama*

\$100 OFF PER PERSON
on our complete package when you pay
with a personal check/cash

JAL Economy Class

\$3,988*

pp double/triple occupancy

\$4,488*

single occupancy

JAL Premium Economy Class

\$4,888*

pp double/triple occupancy

\$5,288*

single occupancy

pandaonline.com

(808) 734-1961

1017 Kapahulu Ave, Honolulu, HI 96816

**A minimum of 16 participants is
required for the tour to operate**

Itinerary

Day 1: (Mon) Sept 28 – Honolulu Depart Honolulu

→ Meet the Panda Travel representative at the airline's check-in counters 3 hours prior to departure.

Day 2: (Tue) Sept 29 – NGO-Nagoya

Vessel Hotel Campana Nagoya (Free Wi-Fi)

→ Arrive at **Chubu Centrair International Airport**. Meet your English-speaking local guide at the arrival lobby. We'll then transfer to **Vessel Hotel Campana Nagoya**, where we'll be staying for the night. Our hotel is located with many shopping and dining options available to you.

Day 3: (Wed) Sept 30 – Nagoya-Matsumoto (B/L)

Matsumoto Marunouchi Hotel (Free Wi-Fi)

→ **Breakfast at hotel.**

→ **8:30am – Meet your guide at the hotel lobby for a drive to Matsumoto**, famous for its rich history, cultural heritage, and stunning scenery including the iconic Matsumoto Castle and the gateway to the Japanese Alps.

→ **9:30am –** Our morning begins with a visit to the **Mino Ceramic Art Museum** where we'll explore a remarkable collection that spans 1300 years of Mino ware pottery. Witness the evolution from ancient styles to contemporary works by talented modern artists. Here, we'll also participate in a **traditional tea ceremony** (matcha), using exquisite tea bowls crafted by Mino artists.

→ **1:00pm –** Prepare for a fun **hands-on experience** at a **soba noodle workshop**. Roll up your sleeves, mix, knead, and cut your own noodles from scratch. Afterwards, savor your creation with a delicious **soba lunch!**

→ **3:30pm –** Along the way, we'll stop by Tsuchidaen Farm for a delightful **grape-picking experience**.

→ **5:00pm –** Arrive at **Matsumoto Marunouchi Hotel**, where we'll be staying for the next 2 nights. Enjoy the evening of shopping and dining at leisure.

Day 4: (Thu) Oct 1 – Matsumoto (B/L)

Matsumoto Marunouchi Hotel (Free Wi-Fi)

→ **Breakfast at hotel.**

→ **8:30am – Meet your guide at the hotel lobby for a full day tour in Matsumoto.**

→ **9:15am –** Our first stop brings us to **Daio Wasabi Farm**, a cultivator of approx. 10% of Japan's wasabi crop. This massive farm benefits from the crystal-clear waters of the Northern Alps and houses traditional wooden waterwheels

that were even featured in Akira Kurosawa's "Dreams" film. While here, don't miss a visit to Daio Shrine, and treat yourself to unique specialties like wasabi beer and wasabi ice cream!

→ **11:00am –** Next, we'll visit **EH Sake Brewery**. This facility combines rice from Azumino's fertile land with spring water from the Northern Alps to create the renowned "Suien" rice wine. Here, visitors can observe the sake brewing process and enjoy a tasting.

→ **12:45pm –** After the sake experience, we'll head to the **Ishii Miso Factory**. This factory specializes in producing a distinctly delicious and rich miso with its 3 year long cedar barrel fermentation process, a disappearing art that they proudly preserve. Afterwards, enjoy **lunch** with dishes infused with miso.

→ **2:30pm –** Time to explore **Matsumoto Castle**, a designated National Treasure with spectacular views of the Northern Alps in the background. Nicknamed the "Crow Castle" for its grandiose black wainscoting, this historic landmark stands as one of Japan's original castles and rivaling the renowned Himeji and Kumamoto castles in prominence.

→ **4:00pm – Return to hotel.** Spend the evening of shopping and dining at your leisure or join our guide for a visit to Nawatedori shopping street for local shops and street food.

Day 5: (Fri) Oct 2 – Matsumoto-Alpine-Toyama (B/L)

Hotel Vischio Toyama (Free Wi-Fi) - **Enjoy public bath**

Note: please ensure you come prepared with a warm jacket, comfortable walking shoes, and sunglasses.

→ **Breakfast at hotel.**

→ **8:30am – Meet your guide at the hotel lobby for the Tateyama Kurobe Alpine Route.**

→ **9:45am – Arrive and enter Ogisawa Station.**

→ **10:30am–4:00pm –** An unforgettable adventure begins on the **Tateyama Kurobe Alpine Route**, which connects Omachi Town to Toyama City. Also known as the "roof of Japan," the Alpine Route is renowned for its unmatched mountain scenery, diverse seasonal landscapes, and the iconic Yuki-no-Otani snow corridor. From late September, savor the lush autumn foliage in the highlands, where colorful leaves beautifully contrast with the remnants of snow.

The modes of transportation to make the journey through the mountains include cable cars, buses, ropeways, and even a trolley bus (the only one of its kind in Japan!). While on the route, we'll also enjoy a grilled freshwater eel (unagi) served over rice in a **bento box**.

→ **4:00pm** – Upon arriving at **Tateyama Station**, we'll drive to Toyama.

→ **5:00pm** – Check in at **Hotel Vischio Toyama**.

Conveniently located in front of Toyama Station, our hotel offers easy access to a variety of shopping and dining options.

Day 6: (Sat) Oct 3 – Toyama-Takayama (B/L)

Mercure Hida Takayama (Free Wi-Fi) - [Enjoy Onsen](#)

→ **Breakfast at hotel.**

→ **9:00am** – Meet your guide at the hotel lobby this morning for Takayama.

→ **9:30am** – This morning, uncover 300 years of history at the **Masunosushi Museum** and discover the techniques and traditions behind Toyama's renowned pressed-trout sushi. Enjoy tastings and learn about the craftsmanship that makes this dish a local favorite, along with various sushi-making techniques.

→ **11:15am** – Here we are at **Tonami Yumenotaira**, a ski area in Toyama Prefecture that transforms into a tourist destination every autumn. In early October, the slopes burst into a stunning display of pink and white cosmos flowers with over a million blooms.

→ **3:30pm** – After enjoying a **Japanese-style lunch** at a local restaurant, take a leisurely stroll through **Ainokura**, Gokayama's largest village. This UNESCO World Heritage site is famed for its gassho-zukuri houses, which are characterized by steep thatched roofs that resemble the hands of Buddhist monks in prayer. While many houses remain private residences, some have been converted into cafes, museums, and guesthouses, inviting visitors to experience the unique heritage of this historic village.

→ **6:00pm** – Arrive at **Mercure Hida Takayama**, located just a short walk from Takayama JR Station. Spend the evening at your leisure, shopping and dining or unwinding in the hotel's indoor and outdoor onsens for a relaxing experience.

Day 7: (Sun) Oct 4 – Takayama-Nagoya (B/L)

Vessel Hotel Campana Nagoya (Free Wi-Fi)

→ **Breakfast at hotel.**

→ **8:30am** – Meet your guide at the hotel lobby for Nagoya.

→ **8:45am** – We'll start our day at **Miyagawa Open Air Market**, one of Japan's largest morning markets. Located along the Miyagawa river and dating back to the Edo period, this marketplace offers a wide range of products exclusively sourced from local farmers. From organic dried popcorn and Hida wood pepper holders to Takayama honey, dried Kabu chips, and fresh seasonal fruits and

vegetables, the market proudly displays the pride of local farmers. Enjoy this fantastic cultural hub, where both locals and visitors come together!

→ **9:45pm** – Once here, explore **Kamisannomachi Street** and admire the well-preserved traditional houses that date back to the Edo period. This picturesque historic area offers a fascinating glimpse into Takayama's rich cultural heritage.

→ **12:30am** – Now, enjoy a **Japanese-style lunch** at a local restaurant.

→ **1:45pm** – Our next stop is a visit to the **Gujo Hachiman Hakurankan**. This museum showcases the town's rich history, traditional crafts, and local artistry, providing visitors a deeper understanding of the region's cultural heritage and craftsmanship. You'll also experience the **Gujo Odori performance**, adding a touch of cultural delight to your visit!

→ **3:30pm** – This afternoon, step into the **Seki Cutlery Museum** in Seki City aka the "City of Blades" with an 800-year legacy in sword and cutlery craftsmanship. The museum features a diverse collection of historical swords and modern knives. Visitors can explore and shop for a variety of Seki-made cutlery, including kitchen knives and scissors.

→ **5:30pm** – Arrive at **Vessel Hotel Campana Nagoya**, located just a short walk from Nagoya Station where you can explore a variety of shopping and dining options while soaking in the vibrant atmosphere of the area.

Day 8: (Mon) Oct 5 – Nagoya/Free day at leisure (B)

Vessel Hotel Campana Nagoya (Free Wi-Fi)

→ **After breakfast, enjoy your free day to explore the wonderful city of Nagoya!**

Here are some shopping spots within 15 min walk from our hotel:

- **Aeon Mall Nagoya Noritake Garden** - a large nature inspired shopping complex with over 150 shops, eateries, and entertainment facilities. Its most popular (and highly photographed) attraction is TSUTAYA BOOKSTORE Noritake Shinmachi's impressive wall of books.
- **BIC Camera Nagoya station West** - a wide selection of the latest gadgets, appliances, and beauty products, it's a must-visit for tech lovers and casual shoppers alike.
- **Nagoya Station** - a major shopping hub with a large number of shops, department stores and underground malls like ESCA. It offers a wide variety of goods, from food and apparel to high-end brands.

Day 9: (Tue) Oct 6 – Nagoya-NGO-Honolulu (B)

→ Breakfast at hotel.

→ 11:00am – Meet your guide at the hotel lobby for Nagoya.

→ 11:15am – This morning, we'll discover the Toyota Group's evolution from an early 20th century textile machinery manufacturer to a modern day automobile industry behemoth at the **Toyota Commemorative Museum of Industry and Technology**. Housed in a redbrick building of one of Toyota's former textile manufacturing factories, the museum features metalwork demonstrations, interactive exhibits, and an exquisite collection of vintage vehicles.

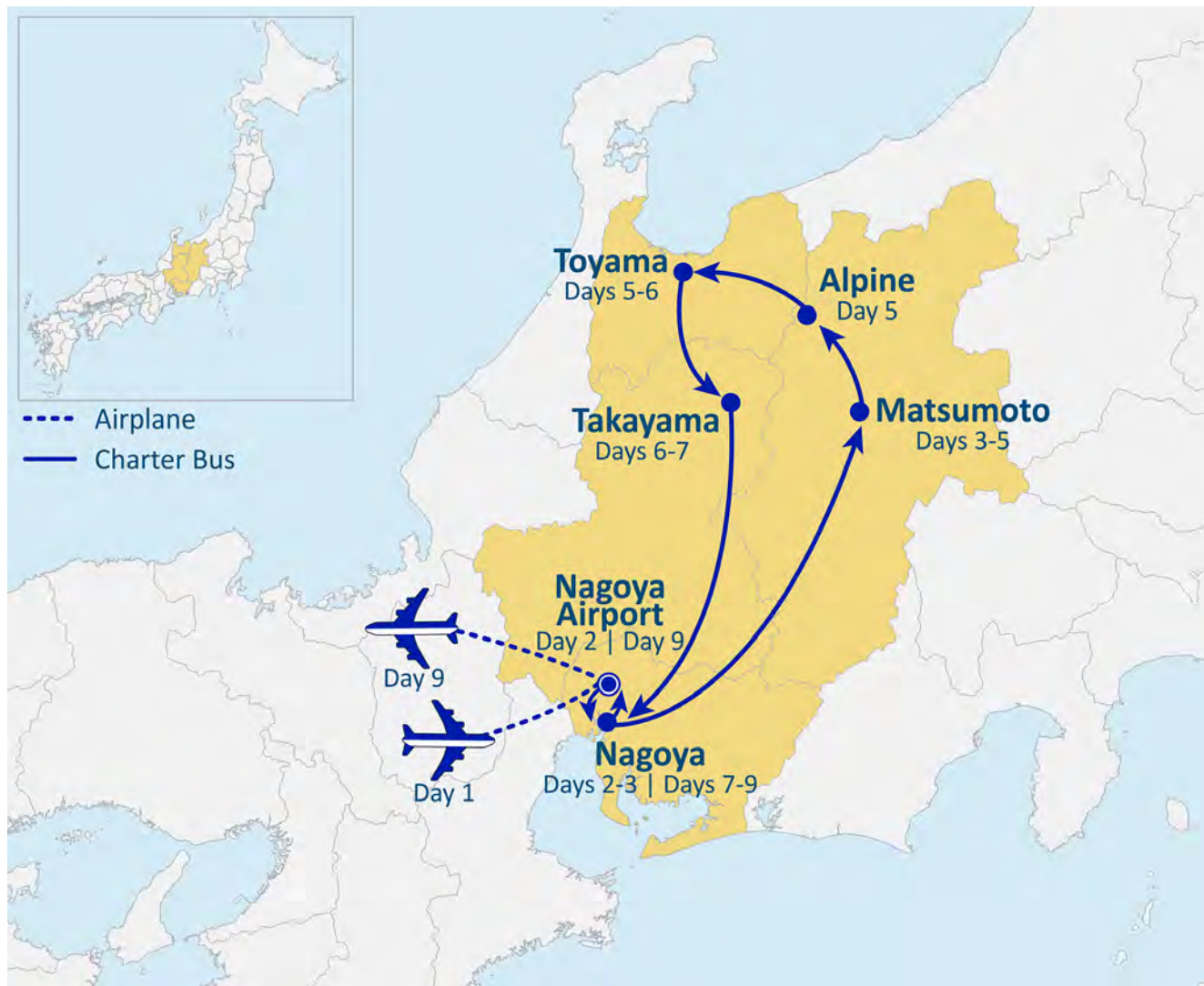
→ 1:15pm – Time to explore the bustling **Osu shopping district**, a vibrant hub that has thrived for over 400 years and it hosts hundreds of shops, restaurants, Buddhist temples and entertainment options. It's also home to many subcultural gatherings, including the popular World Cosplay Summit. Try fried chicken at Enshidajipai and keep an eye out for Aichi specialties like hitsumabushi (grilled eel over rice), miso katsu, and smoky red miso soup.

→ 3:30pm – Next, a visit to **INAX Live Museum** in Tokoname City to explore the rich heritage of clay and ceramics. This museum beautifully showcases the artistry and history of these materials, emphasizing the fundamental elements of earth, fire, and water, while also illustrating how INAX's founder established tile production and transformed the company into a leading manufacturer of housing equipment. During our visit, we'll participate in a **tile wreath-making workshop** and create a unique keepsake to take home.

→ We'll now transfer to **Chubu Centrair International Airport** via **Japan Airlines** for our flight home.

→ Arrive in Honolulu (same day).

Thank you for traveling with us! 🐼



Need to Know...



Payment Policy

- » **To secure your reservation, a \$150 per person deposit is required. The deposit can be refunded until June 26, 2026.**
- » **Final payment due by August 7, 2026. Package is non-refundable after this date.**

* Fares and Fees (Priced in USD)

- » Are subject to change in light of fuel supplements, taxes, and differences in costs.
- » Air ticket fare is guaranteed, but taxes, fees, and fuel surcharges are subject to change until tickets are issued.
- » We reserve the right to make changes to the itinerary with or without notice.



Special Assistance

- » You must inform us of any disability/impairment that requires special attention at the time of your making the reservation.
- » We reserve the right to cancel the reservation(s) if the disability/impairment is unsuitable for the tour.
- » You are also responsible for any costs and/or accommodations related to your disability/impairment, such as providing your own travel companion.



Travel Insurance

- » We highly recommend the purchase of trip insurance. Please ask our representatives for more information.



Travel Documents

- » A valid passport is required for all U.S. citizens and must be valid and not expire at least 6 months from the return tour date.
- » Non-U.S. passport holders must check with the Japanese Consulate to see if a visa is required.



Land Tour Operator & Costs

- » Land Tour Operator is Nippon Travel Agency.
- » Land Tour costs are based on current currency conversion rates, which are subject to change.



Other remarks

- » Not Included in the tour: Gratuities for local English speaking guide; additional baggage fee charges from the airlines; alcohol and soft drinks with meals.
- » A minimum of 16 participants are required for the tour to operate.
- » You are expected to abide by domestic and international government and accommodation policies related to health, safety, and welfare.